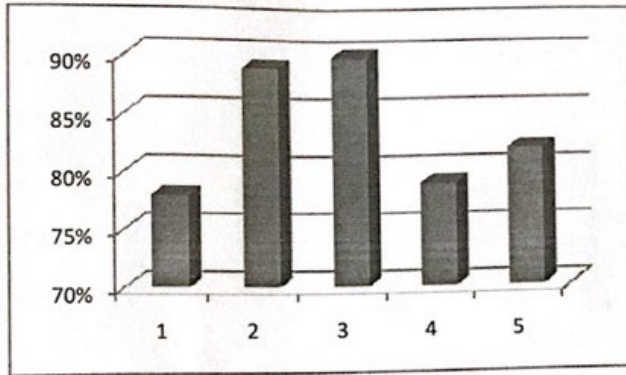


**New Horizon College of Engineering, Bangalore**  
Autonomous College affiliated to VTU, Belagavi  
Accredited by NAAC with 'A' Grade  
Department of Basic Science and Humanities

AY:2016-17

**Feedback from primary stakeholder:student**



Sl.No	Parameter	Percentage
1	How useful is the syllabus of core courses of Ilsem (Autonomy)	78%
2	Is syllabus NHCE shall add to employability	89%
3	Are you happy with new courses	90%
4	Does syllabus shall eventually help generating more skill sets?	79%
5	How good laboratory experiments correlated with theory syllabus?	82%

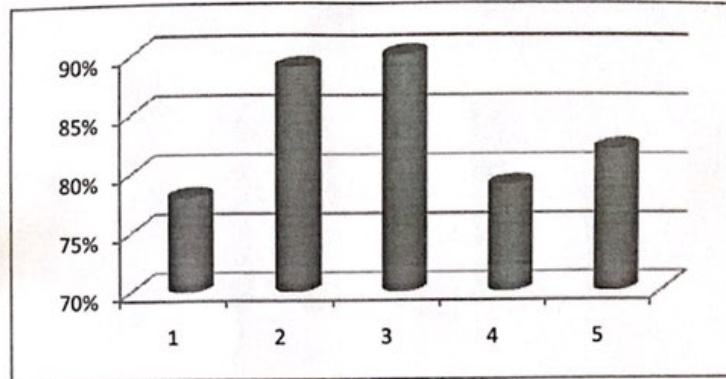
Prepared by  
VIJAYA A  
K

Rs

**New Horizon College of Engineering, Bangalore**  
 Autonomous College affiliated to VTU, Belagavi  
 Accredited by NAAC with 'A' Grade  
 Department of Basic Science and Humanities

AY:2016-17

**Feedback from Primary stakeholder:Parents**



Sl.No	Parameter	Percentage
1	How useful is the syllabus of core courses of II(Autonomy)	78%
2	Are you happy with newly introduced courses?	89%
3	The designed syllabus at NHCE shall add to employability?	90%
4	Does syllabus eventually help you generating more skill set?	79%
5	How good are laboratory experiments correlated to theory syllabus	82%

*Prepared by  
 N. V. A. N. A.  
 4/7/17*

*Ps*

# New Horizon College of Engineering, Bangalore

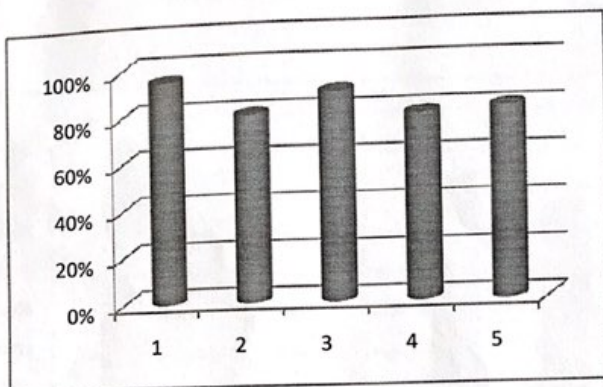
Autonomous College affiliated to VTU, Belagavi

Accredited by NAAC with 'A' Grade

Department of Basic Science and Humanities

AY:2016-17

## Student Satisfaction Survey



Sl.No	Parameter	Percentage
1	How satisfied you feel at BSH in NHCE & infrastructure?	95%
2	How is the CIE schedule in II Sem Calendar of Events?	80%
3	Are you happy with the teaching team?	89%
4	How is the support team at BSH?	79%
5	How helpful and guiding are Lab Instructors & Counsellors	81%

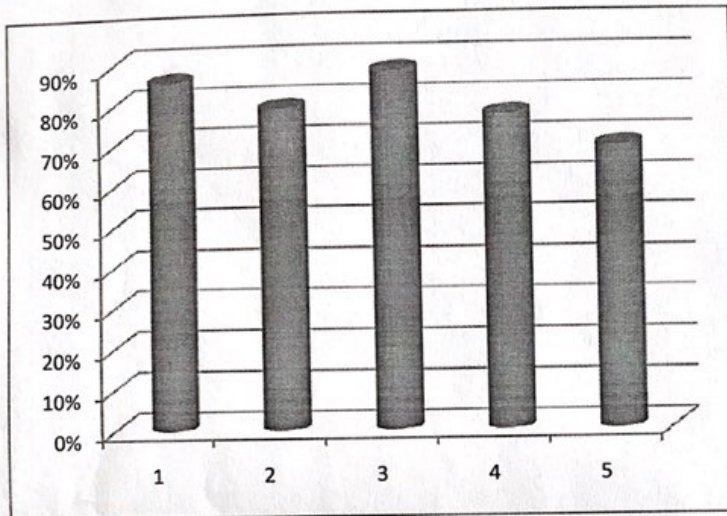
Prepared by  
VVAJAY.A  
1/7/17

Es

**New Horizon College of Engineering, Bangalore**  
 Autonomous College affiliated to VTU, Belagavi  
 Accredited by NAAC with 'A' Grade  
 Department of Basic Science and Humanities

AY:2016-17

**Course Exit Survey**



Sl.No	Parameter	Percentage
1	was the course interesting?	86%
2	Rate the difficulty level of the assignments, internal tests, overall difficulty level of the course	79%
3	were announcements regarding the learning material supported learning objectives	88%
4	Are you interested in taking up the mock exam? the course was boring & laborious	77%
5	was the course interesting?	69%

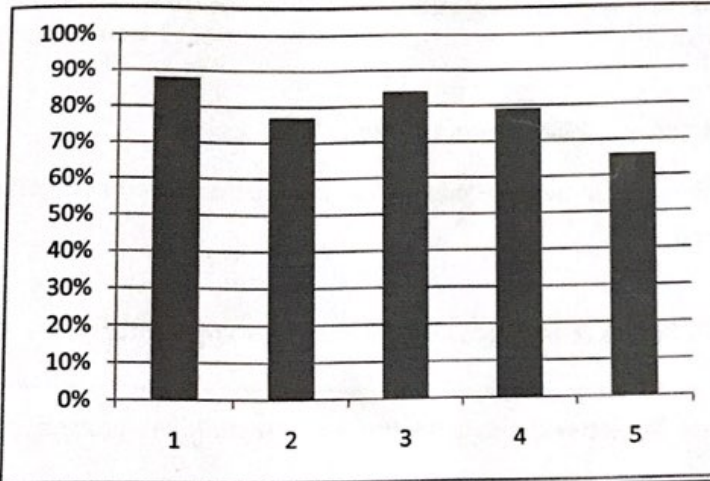
*Prepared by  
 VIJAYA A  
 Kingal*

*Es*

**New Horizon College of Engineering**  
 Autonomous college affiliated to VTU, Accredited with NAAC 'A' grade  
**Department of Basic Science and Humanities**

AY:2016-17

**Course Exit Survey**



Sl.No	Parameter	Percentage
1	was the course interesting?	88% <i>kw</i>
2	Rate the difficulty level of the assignments,intenal tests,overall difficulty level of the course	<del>88%</del> 77%
3	Were announcements regarding the learning material supported learning objectives	77%
4	Are you interested in taking up the mock exam?the course was boring & laborious	84%
5	was the course interesting?	79%
		66%

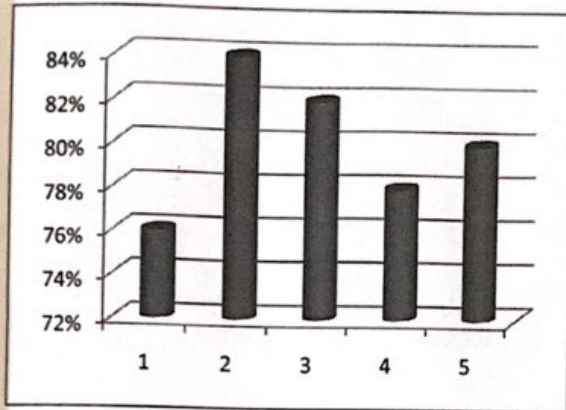
*Prepared by  
 VIJAYA A  
 Vijayant*

*Revathi*  
 H.O.D. - PHYSICS  
 NEW HORIZON

**New Horizon College of Engineering**  
 Autonomous College affiliated to VTU, accredited with NAAC 'A' grade  
**Department of Basic Science and Humanities**

**AY:2016-17**

**Feedback from primary stakeholder:Parents**



Sl.No	Parameter	Percentage
1	How useful is the syllabus of core courses of I sem(Autonomy)	76%
2	Are you happy with newly introduced courses?	84%
3	The designed syllabus at NHCE shall add to employability?	82%
4	Does syllabus eventually help you generating more skill set?	78%
5	How good are laboratory experiments correlated to theory syllabus:	80%

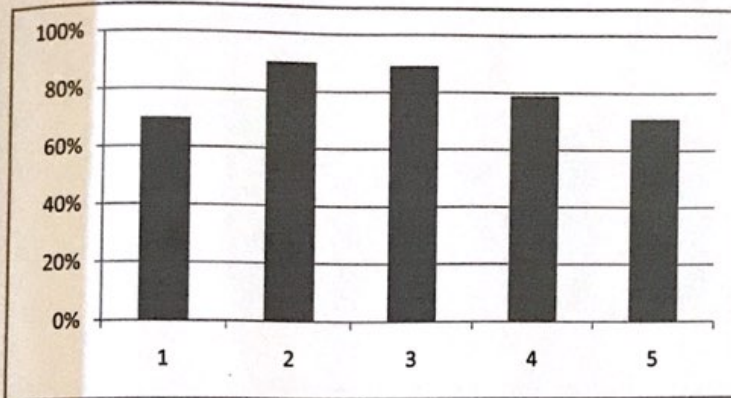
*Prepared by  
 VIJAYA-A  
 Vijay*

*Heath*  
 H.O.D. - PHYSICS  
 NEW HORIZON COLLEGE OF ENGINEERING  
 BANGALORE

**NEW HORIZON COLLEGE OF ENGINEERING**  
 Autonomous College affiliated to VTU, Accredited with NAAC 'A' grade  
**Department of Basis Science and Humanities**

AY:2016-17

**Feedback from primary stakeholder: Students**



Sl.No	Parameter	Percentage
1	How useful is the syllabus of core courses I sem (Autonomy)	70%
2	Is syllabus NHCE shall add to employability	90%
3	Are you happy with new courses	89%
4	Does syllabus shall eventually help generating more skill sets?	79%
5	How good laboratory experiments correlated with theory syllabus?	71%

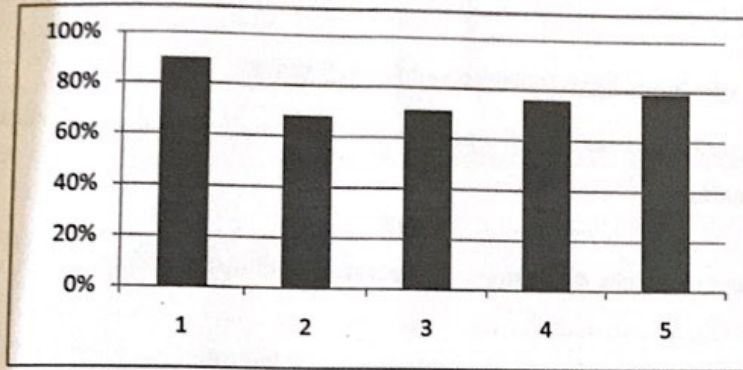
*Prepared by  
 VIJAYA A  
 Vijaya*

*Poojitha*  
 H.O.D. - PHYSICS  
 NEW HORIZON COLLEGE OF ENGINEERING  
 BANGALORE

**NEW HORIZON COLLEGE OF ENGINEERING**  
Autonomous College affiliated to VTU , Accrediated with NAAC 'A' grade  
**Department of Basis Science and Humanities**

AY:2016-17

**Students Satisfaction Survey**



Sl.No	Parameter	Percentage
1	How satisfied you feel at BSH in NHCE & infrastrucure?	90%
2	How is the CIE schedule in I Sem Calendar of Events?	68%
3	Are you happy with the teaching team?	71%
4	How is the support team at BSH?	76%
5	How helpful and guiding are Lab Instructors & Counsellors	79%

Prepared by  
VIJAYA.A.  
HOD

*Resathi*  
H.O.D. - PHYSICS  
NEW HORIZON COLLEGE OF ENG  
BANGALORE